

WaterTech



COMPANY
MANAGEMENT SYSTEM
CERTIFIED BY DNV GL
= ISO 9001 =
= ISO 14001 =



MID MI-001

Irrigation impeller water meter,
dry dial

DELTA SDO

DELTA SDC

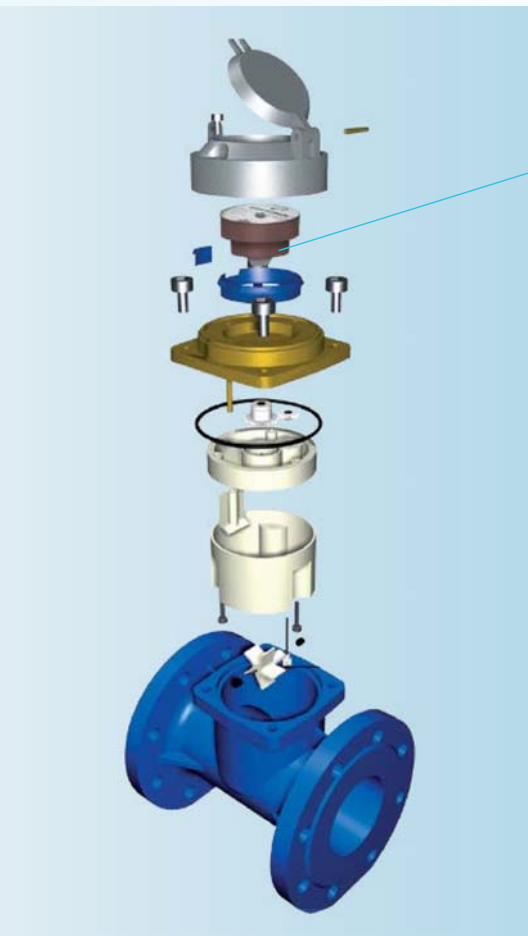
Irrigation impeller water meter, dry dial

PERFORMANCE ACCORDING TO MID 2004/22/CE DIRECTIVE

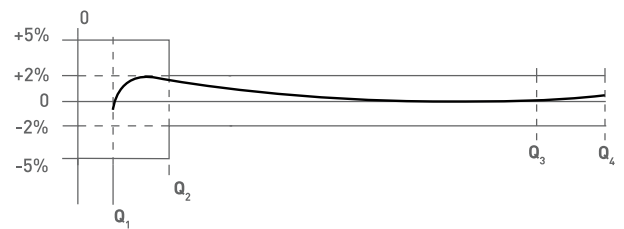
SIZE		PERMANENT FLOW Q_3 (m ³ /h)	MAXIMUM FLOW Q_4 (m ³ /h)	TRANSITIONAL FLOW Q_2 (l/h)	MINIMUM FLOW Q_1 (l/h)	WORKING PRESSURE (bar)	MINIMUM READING (l)	MAXIMUM READING (m ³)	TEMPERATURE CLASS
(mm)	(inch)								
50	2"	63	78,75	5040	3150	16	1	999.999	T30/T50
65	2 1/2"	63	78,75	5040	3150	16	1	999.999	T30/T50
80	3"	100	125,00	8000	5000	16	1	999.999	T30/T50
100	4"	160	200,00	12800	8000	16	1	999.999	T30/T50
125	5"	250	312,50	20000	12500	16	1	999.999	T30/T50
150	6"	400	500,00	32000	20000	16	10	9.999.999	T30/T50
200	8"	630	787,50	50400	31500	16	10	9.999.999	T30/T50
250	10"	1000	1250,00	80000	50000	16	10	9.999.999	T30/T50
300	12"	1600	2000,00	128000	80000	16	10	9.999.999	T30/T50

Metrological class MID (Q_3/Q_1) R=20

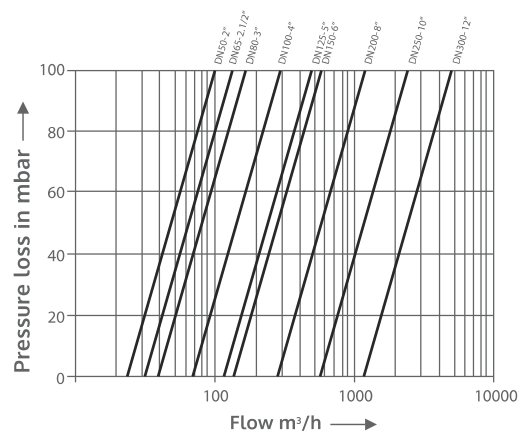
Rev. 4/2017 The content of this data sheet is intended to give general information only, we reserve the right to make alterations without prior notification



TYPICAL ERROR CURVE

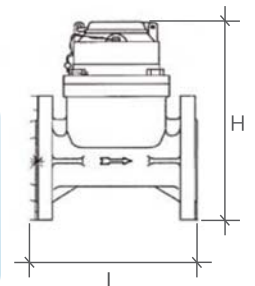


PRESSURE LOSS DIAGRAM



DIMENSIONS

(mm) SIZE (inch)	50	65	80	100	125	150	200	250	300
L (mm)	200	200	225	250	250	300	350	450	500
H (mm)	260	270	290	300	310	340	395	445	505



Version with metal lid and head available on request

For additional information and options, do not hesitate to contact us

WATERTECH S.P.A. - Water meters

Factory, commercial main office and administration: Str. Antica Fornace, 2/4 • 14053 Canelli (AT) – Italy
Tel +39 0141 822106-832151 • **Fax** +39 0141 832191-832198 • **Mail** info@wtmeters.it • **Web** www.wtmeters.it