



COMPANY  
MANAGEMENT SYSTEM  
CERTIFIED BY DNV GL  
= ISO 9001 =  
= ISO 14001 =



## MID MI-001

Single-jet composite water meter  
with dry dial counter

# ALFA SDC

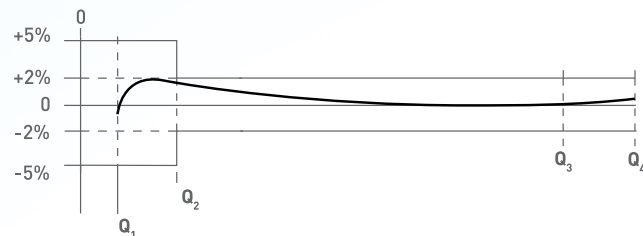
## Single-jet composite water meter with dry dial counter

### PERFORMANCE ACCORDING TO MID 2004/22/CE DIRECTIVE

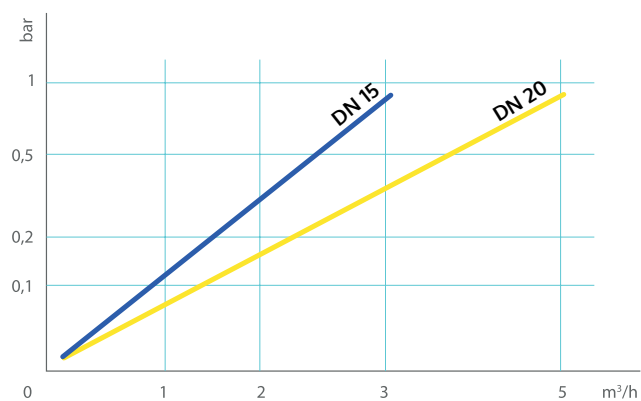
SIZE		PERMANENT FLOW $Q_3$ (m <sup>3</sup> /h)	MAXIMUM FLOW $Q_4$ (m <sup>3</sup> /h)	TRANSITIONAL FLOW $Q_2$ (L/h)	MINIMUM FLOW $Q_1$ (L/h)	WORKING PRESSURE (bar)	MINIMUM READING (l)	MAXIMUM READING (m <sup>3</sup> )	TEMPERATURE CLASS
(mm)	(inch)								
13/15	1/2"	2,5	3,125	50	31,3	16	0,05	99.999	T30/T50
20	3/4"	4,0	5,000	80	50,0	16	0,05	99.999	T30/T50

Metrological class MID ( $Q_3/Q_1$ ) R = 80

#### TYPICAL ERROR CURVE

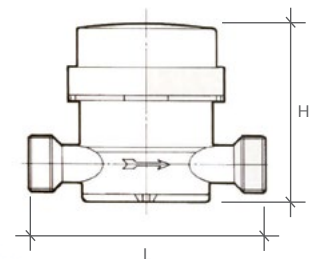


#### PRESSURE LOSS DIAGRAM



#### DIMENSIONS

(mm)	13/15	20
SIZE (inch)	1/2"	3/4"
L (mm)	110 - 115	130
H (mm)	89	89
TOTAL LENGTH OF CONNECTORS (mm)	80	100



For additional information and options, do not hesitate to contact us

**WATERTECH S.P.A. - Water meters**

Factory, commercial main office and administration: Str. Antica Fornace, 2/4 • 14053 Canelli (AT) – Italy  
**Tel** +39 0141 822106-832151 • **Fax** +39 0141 832191-832198 • **Mail** info@wtmeters.it • **Web** www.wtmeters.it